



Great Chart Primary School

Newsletter for Parents and Pupils

September 2021



MESSAGE FROM MRS PANG, HEADTEACHER

I hope you all had a lovely Summer holiday and are all refreshed for the new school year. It's amazing how another school year has come around so quickly. We are all keeping our fingers crossed that this year will be a smooth and enjoyable year.

I would like to welcome to our school community the following members of staff: Mr Birch, who will be teaching in Y6 and will be a member of a Leadership Team as the Y5/6 Phase Leader. We would also like to welcome Miss Smith who will be supporting in Year 1.

Welcome to all our new children and their families who are starting with us this month, either as part of EYFS or any other year group. We hope you all feel part of our whole school community very quickly.

Please could I say a huge thank you to Mr Roberts, Mr Beck, our Site Managers and to the cleaning staff. They have been working really hard throughout the holiday to ensure the school and premises once again look amazing.

Priorities for the school year include:

- Continue the recovery process to ensure ALL pupils are provided with opportunities to achieve
- Ensure ALL pupils experience Quality First Teaching and are provided with opportunities within the whole curriculum.
- To ensure standards in Reading improve by placing reading and books at the centre of the curriculum.
- To ensure the school re-engages with parents providing them with the necessary information, advice and guidance to support their child, through targeted support for 'hard to reach' families and whole school initiatives
- Support the Physical and Mental Health and Wellbeing of staff and pupils, enabling them to become increasingly more resilient, independent and confident
- Promote inclusivity and celebrate diversity by continually striving to create an environment which is free from harassment, bullying, unlawful discrimination and victimisation, requiring our whole school community to respect differences, to place value on individual contribution and to have no tolerance of prejudice
- Through adapting to the changes in the EYFS curriculum, create an enabling environment to develop communication and language and to meet the needs of ALL pupils, putting the child at the centre of the curriculum.

In this issue

- Page 1– Message From Mrs Pang
- Page 2–Message from Mrs Pang continued
- Page 2– Message from Mr Fitch
- Page 3– Term 1 Values
- Page 3–Wellbeing Day
- Page 4–The Zones of Regulation
- Page 5–Diary Dates



We will be continuing our focus with the children on being part of a community within school, respecting our building and respecting one another. Our core values will be looked at throughout the year and will be developed further:

- Respect
- Aspiration
- Responsibility
- Resilience
- Kindness
- Independence

I would also like to continue to ensure **all** parents are fully engaged in their child's education. We have so many parents who are extremely supportive and involved in their child's educational development but we need to ensure the few who don't engage, understand the importance they play in their son's or daughter's educational success

Please could I take this opportunity to reinforce that the staff, governors and myself want to work with parents to ensure the children reach their full potential. We want them to feel happy and safe at school and so the partnership we have with parents is crucial.

I hope to see you all throughout the year at the various events we hold, parent/ teacher consultations and open sessions etc. We are all looking forward to the year ahead.

Message from Mr Fitch, Chair of Governors

On behalf of the school Governors I would like to add my welcome to that of Mrs Pang. The past year has been a real challenge for all of us and I have been so impressed with the incredible staff team and the pupils of our fantastic school. We all hope that the year ahead can be more 'normal' than the last one. We have had 3 new governors join us over the past year - Chris Gibbins, Ronnie Manek and Peter Mutabaruka, I really hope that over the next few months you will get a chance to meet them and us as we, hopefully, start to be around the school a bit more. I would also like to publicly thank Sally Gathern who stood down as a parent governor this year having completed her elected term. She has been a valuable member of the Governing body and we are grateful for all the work and support she has given to us and the school.

I would like to end with my usual request that we all continue to work together in partnership for the benefit of the school and the children we have the privilege to teach. The school is so much more effective when we are able to work collaboratively. We have an incredible team of staff at Great Chart, ably led by Mrs Pang, and I believe by working together we can continue to make Great Chart a 'Great Place to Discover and Learn'.

Best wishes for the year ahead.



Our School Leadership team comprises the following members of staff -
Senior Leadership Team: Mrs Pang (Headteacher), Mrs High (Deputy HT / SENCO) and Mrs Thomas (Assistant HT / Y1/2 Phase Leader), Mrs Page (School Business Manager)
Wider Leadership Team: Mr Birch (Y5/6 Phase Leader), Mrs Barker (Y3/4 Phase Leader / Teaching & Learning Leader) and Mrs Davies (EYFS Phase Leader)

Please feel free to contact them via the office



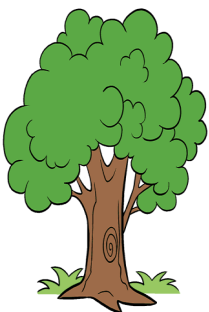
Our value for Term 1 will be Respect. This value is at the core of everything we do in school. It underpins learning through behaviour and one's attitude to the people and the world around them. We are extremely lucky that our school community (staff, children, parents, governors) is a very positive, supportive and respectful one.

Along with this value we will also be focusing on the following words and exploring what they mean to us:

- Honesty
- Manners
- Equality
- Valuing people for who they are
- Loyalty
- Understanding





WELLBEING WALK

The children enjoyed another fun-filled Well Being day on 18th June. Unfortunately, the weather was not forecasted to be kind to us but this didn't stop the teachers planning a great day which the children were sure to enjoy. Year 2 were brave and ventured out in the rain; children loved splashing about in the puddles and loved being out and about in our local environment. Fruit salads were made by the Year 4 classes and Year Five children practised their sewing skills, making a floral meadow tapestry. The whole school community looks forward to these days and it is always a nice way to end a week.



Message from Mrs High

The ZONES of Regulation®

			
BLUE ZONE Sad Sick Tired Bored Moving Slowly	GREEN ZONE Happy Calm Feeling Okay Focused Ready to Learn	YELLOW ZONE Frustrated Worried Silly/Wiggly Excited Loss of Some Control	RED ZONE Mad/Angry Mean Terrified Yelling/Hitting Out of Control

Last year the children were introduced to **The Zones of Regulation**, a social-emotional learning curriculum, created to teach children self-regulation and emotional control. This is an approach that is now well embedded in school.

The Zones of Regulation uses four colours to help children self-identify how they're feeling and categorise it based on colour. It is designed to help children better understand their emotions, sensory needs, and thinking patterns. They learn different strategies to help them cope and manage their emotions based on which colour zone they're in.

Many of our parents are now using the language of The Zones of Regulation at home with their children so that a consistent approach to supporting children to self-regulate their emotions is used. If you would like a copy of the chart above, please email the office and I will be happy to send a copy home.

New Start Times

Foundation Classes

8:50am–2:40pm

Key Stage 1

Year 2—8:30am–2:50pm
 Year 1—8:40am – 3:00pm

Key Stage 2

Year 6 & 3—8:30am–2:50pm



Attendance is a high priority and it is important that children are not late for school. It is school policy that children arriving after the register has been taken, should be marked late.



Diary Dates

Wednesday 1st September—Staff Development Day School is Closed to Children

Thursday 2nd September—First Day of Term

Thursday 9th September—Kent Test

Tuesday 19th October 7pm—Friends' Association Meeting

Thursday 21st October—Individual Photos

Friday 22nd October—Last Day of Term

Monday 1st November—First Day of Term

Upcoming Exciting Dates

2nd September—Year 5 Toke Bikeability

3rd September—Year 5 Griffin Bikeability

6th—10th September—Year 6 Level 2 Bikeability

Friday 1st October—Harvest Service

Please note—All dates are subject to change and dependant on current guidelines

Cashless School

IMPORTANT INFORMATION



Cash is Not Accepted

Please note that we are not accepting cash payments in the school, we have introduced a strictly cashless system. Please be reminded that we are only accepting **cheques or online payments** only. On a daily basis we have started to receive a huge number of cash payments again and that sometimes leads to money getting lost or misplaced. We are unable to issue receipts for all cash received. Lots of primary and secondary schools have a cashless system in place also.

Online payments - this is the preferred method. If you don't use this system already, please contact Mrs Davies 01233 620040 ext.215, office@great-chart.kent.sch.uk. To access the online payments system, please visit the Parents section on the school website.

Cheques - should be made payable to GREAT CHART PRIMARY SCHOOL and placed in an envelope clearly marked with pupil(s) name and class and stating what the payment is for.

If you think you will have difficulties in paying online or by cheque, please contact Mrs Davies ASAP and she will discuss alternative arrangements.

We will not accept any cash payments without the prior arrangement.



NO CASH